A stylized map of the Pacific region, including parts of North America, Central America, the Caribbean, and South America. The map uses a color palette of light blue for water and various shades of green for land. Several red dots are placed on the map, marking specific locations: one on the West Coast of North America, one in the Caribbean, one in the northern part of South America, and a cluster of four in the southern part of South America.

# **APiCS, WALS, and the creole typological profile (if any)**

***Michael Cysouw***

MPI-EVA Leipzig - LMU München

# APiCS data so far

- 70 languages
- 120 features
- Multiple values per feature possible
- Only 1.4 % missing data!
- 46 features comparable to WALS

# How similar are APiCS languages to each other?

---

Feature 1	Val. 1	Val. 2	Val. 3	Val. 4	Val. 5	Val. 6
-----------	--------	--------	--------	--------	--------	--------

---

African American English	FALSE	TRUE	FALSE	FALSE	FALSE	FALSE
--------------------------	-------	------	-------	-------	-------	-------

Afrikaans	TRUE	TRUE	TRUE	FALSE	FALSE	FALSE
-----------	------	------	------	-------	-------	-------

---

# How similar are APiCS languages to each other?

---

Feature	Val. 1	Val. 2	Val. 3	Val. 4	Val. 5	Val. 6
African American English	0	1	0	0	0	0
Afrikaans	1	1	1	0	0	0

---

# 4 agreements out of 6: similarity of 4/6

---

Feature	Val. 1	Val. 2	Val. 3	Val. 4	Val. 5	Val. 6
African American English	0	1	0	0	0	0
Afrikaans	1	1	1	0	0	0

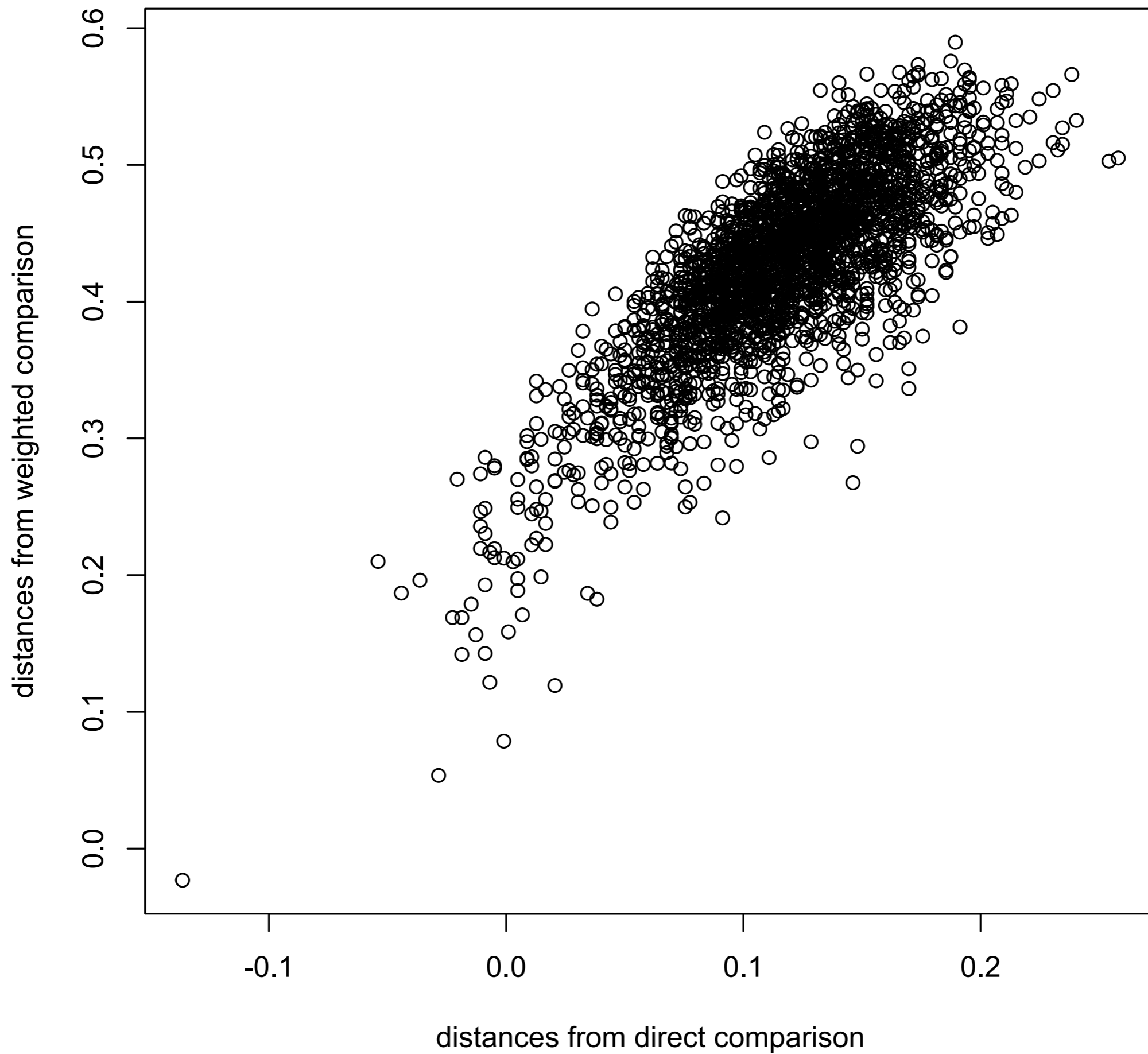
---

# weight agreements by overall frequency (frequent values count less)

---

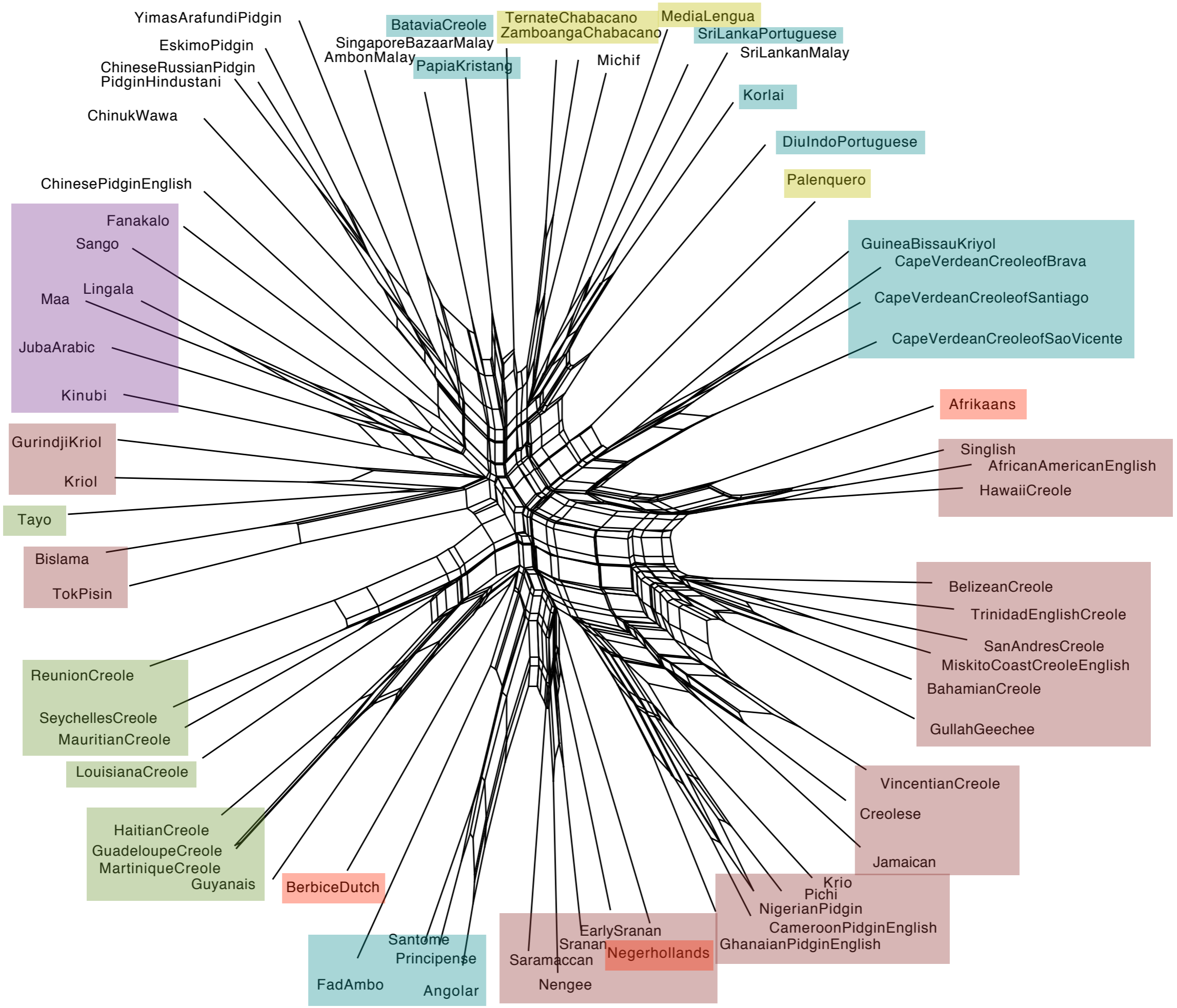
Feature	Val. 1	Val. 2	Val. 3	Val. 4	Val. 5	Val. 6
African American English	0	1	0	0	0	0
Afrikaans	1	1	1	0	0	0

---



African American English	0	0.32	0.73	0.51	0.16	0.51	0.27	0.51	0.65	0.46	0.57	0.57	0.49	0.49	0.51	0.59	0.43	0.54	0.46
Afrikaans	0.32	0	0.68	0.73	0.38	0.49	0.46	0.68	0.76	0.62	0.59	0.59	0.54	0.62	0.59	0.7	0.57	0.49	0.51
Ambon Malay	0.73	0.68	0	0.65	0.57	0.3	0.62	0.68	0.59	0.59	0.73	0.62	0.59	0.59	0.57	0.68	0.62	0.59	0.51
Angolar	0.51	0.73	0.65	0	0.49	0.38	0.54	0.43	0.51	0.32	0.54	0.46	0.54	0.65	0.73	0.68	0.43	0.62	0.38
Bahamian Creole	0.16	0.38	0.57	0.49	0	0.38	0.27	0.41	0.59	0.46	0.57	0.43	0.38	0.49	0.54	0.51	0.38	0.43	0.38
Batavia Creole	0.51	0.49	0.3	0.38	0.38	0	0.41	0.41	0.43	0.32	0.46	0.3	0.38	0.38	0.59	0.62	0.41	0.32	0.27
Belizean Creole	0.27	0.46	0.62	0.54	0.27	0.41	0	0.46	0.54	0.46	0.59	0.54	0.41	0.46	0.59	0.43	0.41	0.43	0.35
Berbice Dutch	0.51	0.68	0.68	0.43	0.41	0.41	0.46	0	0.49	0.43	0.59	0.46	0.46	0.35	0.57	0.54	0.46	0.51	0.38
Bislama	0.65	0.76	0.59	0.51	0.59	0.43	0.54	0.49	0	0.57	0.54	0.49	0.38	0.49	0.68	0.62	0.54	0.59	0.51
Cameroon Pidgin English	0.46	0.62	0.59	0.32	0.46	0.32	0.46	0.43	0.57	0	0.59	0.51	0.51	0.51	0.7	0.65	0.38	0.46	0.3
Cape Verdean Creole of Brava	0.57	0.59	0.73	0.54	0.57	0.46	0.59	0.59	0.54	0.59	0	0.24	0.38	0.54	0.7	0.73	0.62	0.57	0.54
Cape Verdean Creole of Santiago	0.57	0.59	0.62	0.46	0.43	0.3	0.54	0.46	0.49	0.51	0.24	0	0.24	0.43	0.73	0.65	0.51	0.49	0.41
Cape Verdean Creole of Sao Vicente	0.49	0.54	0.59	0.54	0.38	0.38	0.41	0.46	0.38	0.51	0.38	0.24	0	0.3	0.62	0.57	0.49	0.41	0.38
Chinese Pidgin English	0.49	0.62	0.59	0.65	0.49	0.38	0.46	0.35	0.49	0.51	0.54	0.43	0.3	0	0.49	0.41	0.54	0.35	0.41
Chinese Russian Pidgin	0.51	0.59	0.57	0.73	0.54	0.59	0.59	0.57	0.68	0.7	0.7	0.73	0.62	0.49	0	0.59	0.62	0.59	0.59
Chinuk Wawa	0.59	0.7	0.68	0.68	0.51	0.62	0.43	0.54	0.62	0.65	0.73	0.65	0.57	0.41	0.59	0	0.57	0.57	0.41
Creolese	0.43	0.57	0.62	0.43	0.38	0.41	0.41	0.46	0.54	0.38	0.62	0.51	0.49	0.54	0.62	0.57	0	0.51	0.32
Diu Indo-Portuguese	0.54	0.49	0.59	0.62	0.43	0.32	0.43	0.51	0.59	0.46	0.57	0.49	0.41	0.35	0.59	0.57	0.51	0	0.49
Early Sranan	0.46	0.51	0.51	0.38	0.38	0.27	0.35	0.38	0.51	0.3	0.54	0.41	0.38	0.41	0.59	0.41	0.32	0.49	0
Eskimo Pidgin	0.46	0.54	0.41	0.46	0.43	0.43	0.43	0.41	0.49	0.51	0.59	0.54	0.51	0.35	0.35	0.35	0.51	0.65	0.35
Fa dAmbo	0.43	0.68	0.62	0.41	0.51	0.51	0.57	0.49	0.59	0.51	0.51	0.51	0.54	0.46	0.62	0.54	0.57	0.7	0.38
Fanakalo	0.65	0.76	0.7	0.57	0.57	0.46	0.51	0.46	0.43	0.51	0.49	0.43	0.41	0.35	0.7	0.43	0.49	0.57	0.41
Ghanaian Pidgin English	0.43	0.54	0.7	0.59	0.46	0.51	0.57	0.51	0.54	0.41	0.62	0.57	0.51	0.46	0.68	0.62	0.43	0.54	0.41
Guadeloupe Creole	0.51	0.65	0.54	0.41	0.49	0.43	0.51	0.46	0.32	0.46	0.51	0.46	0.43	0.51	0.73	0.59	0.46	0.68	0.41
Guinea-Bissau Kriyol	0.51	0.57	0.59	0.35	0.46	0.41	0.54	0.51	0.41	0.54	0.41	0.32	0.41	0.62	0.73	0.7	0.43	0.59	0.43
Gullah/Geechee	0.22	0.38	0.54	0.57	0.22	0.43	0.24	0.43	0.65	0.41	0.62	0.51	0.38	0.38	0.59	0.46	0.38	0.49	0.41
Gurindji Kriol	0.51	0.54	0.59	0.62	0.51	0.41	0.43	0.59	0.59	0.54	0.73	0.62	0.57	0.57	0.68	0.57	0.49	0.57	0.38
Guyanais	0.49	0.51	0.62	0.57	0.46	0.35	0.46	0.35	0.51	0.51	0.43	0.27	0.32	0.32	0.59	0.59	0.43	0.49	0.41
Haitian Creole	0.51	0.59	0.57	0.35	0.46	0.41	0.57	0.35	0.38	0.43	0.49	0.46	0.43	0.51	0.68	0.59	0.51	0.59	0.46
Hawaii Creole	0.16	0.38	0.68	0.54	0.22	0.51	0.24	0.49	0.57	0.46	0.54	0.49	0.41	0.49	0.59	0.57	0.46	0.51	0.41
Jamaican	0.32	0.62	0.54	0.46	0.19	0.35	0.22	0.27	0.51	0.43	0.62	0.49	0.49	0.41	0.59	0.51	0.32	0.46	0.32
Juba Arabic	0.57	0.59	0.51	0.62	0.49	0.43	0.49	0.49	0.49	0.57	0.62	0.51	0.46	0.51	0.57	0.46	0.41	0.68	0.43
Kinubi	0.54	0.68	0.54	0.43	0.49	0.43	0.43	0.43	0.49	0.49	0.46	0.43	0.35	0.43	0.68	0.51	0.43	0.49	0.35
Korlai	0.73	0.49	0.62	0.68	0.65	0.41	0.68	0.73	0.73	0.62	0.7	0.59	0.54	0.62	0.59	0.7	0.59	0.49	0.57





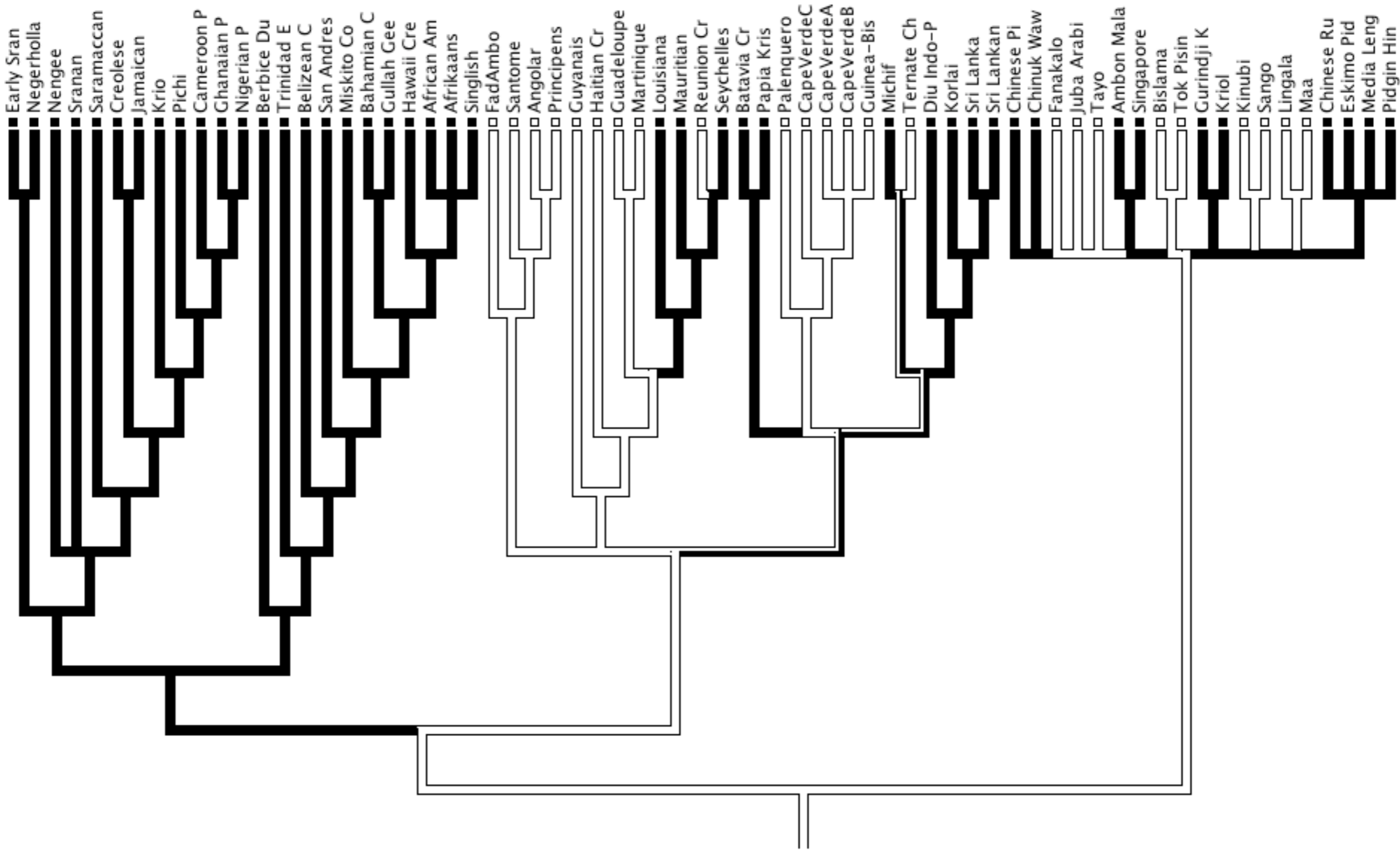
# Choose clustering to minimize number of changes necessary

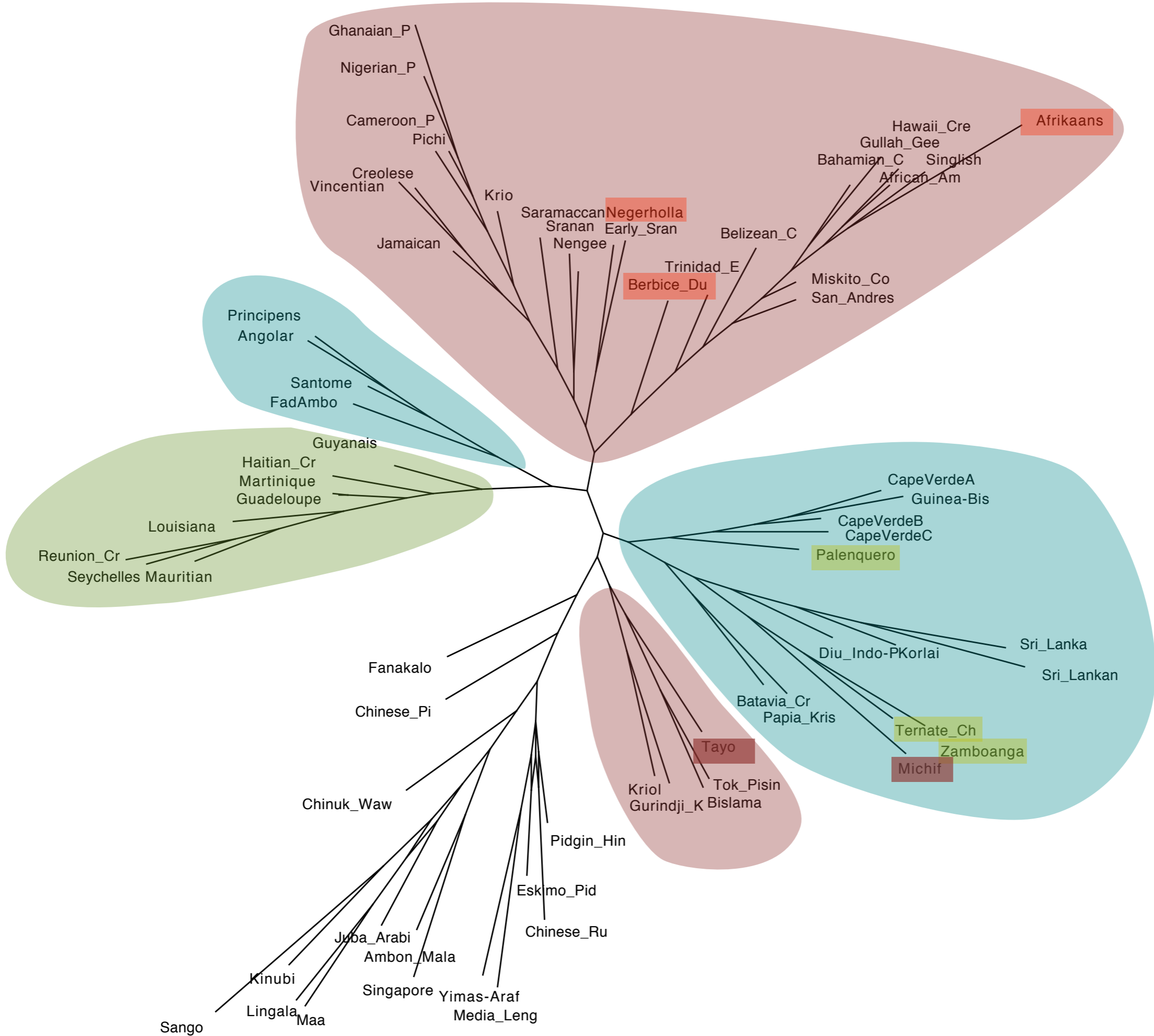
---

Feature	Val. 1	Val. 2	Val. 3	Val. 4	Val. 5	Val. 6
African American English	0	1	0	0	0	0
Afrikaans	1	1	1	0	0	0

---







Language	Lexifier	Area
Fanakalo	African	Africa
Juba Arabic	African	Africa
Kinubi	African	Africa
Lingala	African	Africa
Maa	African	Africa
Sango	African	Africa
Afrikaans	Germanic	Africa
Cameroon Pidgin English	Germanic	Africa
Ghanaian Pidgin English	Germanic	Africa
Krio	Germanic	Africa
Nigerian Pidgin	Germanic	Africa
Pichi	Germanic	Africa
Chinese Pidgin English	Germanic	Asia
Bahamian Creole	Germanic	Caribbean
Belizean Creole	Germanic	Caribbean
Berbice Dutch	Germanic	Caribbean
Creolese	Germanic	Caribbean
Early Sranan	Germanic	Caribbean
Gullah/Geechee	Germanic	Caribbean
Jamaican	Germanic	Caribbean
Miskito Coast Creole English	Germanic	Caribbean
Negerhollands	Germanic	Caribbean
Nengee	Germanic	Caribbean
San Andres Creole	Germanic	Caribbean
Saramaccan	Germanic	Caribbean
Sranan	Germanic	Caribbean
Trinidad English Creole	Germanic	Caribbean
Vincentian Creole	Germanic	Caribbean
Singlish	Germanic	Indian Ocean
African American English	Germanic	North America
Bislama	Germanic	Pacific
Gurindji Kriol	Germanic	Pacific
Hawaii Creole	Germanic	Pacific
Kriol	Germanic	Pacific
Tok Pisin	Germanic	Pacific

Language	Lexifier	Area
Chinese Russian Pidgin	Other	Asia
Singapore Bazaar Malay	Other	Indian Ocean
Sri Lankan Malay	Other	Indian Ocean
Chinuk Wawa	Other	North America
Eskimo Pidgin	Other	North America
Michif	Other	North America
Ambon Malay	Other	Pacific
Pidgin Hindustani	Other	Pacific
Yimas-Arafundi Pidgin	Other	Pacific
Angolar	Romance	Atlantik
Cape Verdean Creole of Brava	Romance	Atlantik
Cape Verdean Creole of Santiago	Romance	Atlantik
Cape Verdean Creole of Sao Vicente	Romance	Atlantik
Fa dAmbo	Romance	Atlantik
Guinea-Bissau Kriyol	Romance	Atlantik
Principense	Romance	Atlantik
Santome	Romance	Atlantik
Guadeloupe Creole	Romance	Caribbean
Guyanais	Romance	Caribbean
Haitian Creole	Romance	Caribbean
Louisiana Creole	Romance	Caribbean
Martinique Creole	Romance	Caribbean
Palenquero	Romance	Caribbean
Batavia Creole	Romance	Indian Ocean
Diu Indo-Portuguese	Romance	Indian Ocean
Korlai	Romance	Indian Ocean
Mauritian Creole	Romance	Indian Ocean
Reunion Creole	Romance	Indian Ocean
Seychelles Creole	Romance	Indian Ocean
Sri Lanka Portuguese	Romance	Indian Ocean
Papia Kristang	Romance	Pacific
Tayo	Romance	Pacific
Ternate Chabacano	Romance	Pacific
Zamboanga Chabacano	Romance	Pacific
Media Lengua	Romance	South America

# ANOVA 'adonis' on feature 15: inclusive/exclusive distinction in pronouns

---

	Df	Sums Of Sqs	Mean Sqs	F. Model	R2	Pr(>F)
Lexifier	3.000	0.200	0.067	0.848	0.025	0.501
Area	7.000	2.539	0.363	4.626	0.319	0.004**
Lexifier:Area	5.000	0.985	0.197	2.514	0.124	0.070
Residuals	54.000	4.233	0.078		0.532	
Total	69.000	7.957			1.000	

---

# Clusivity by Lexifier

---

	Lexifier			
Inclusive/Exclusive Opposition	Germanic	Romance	African	Other
No	24	23	6	8
Yes	5	2	0	1

---



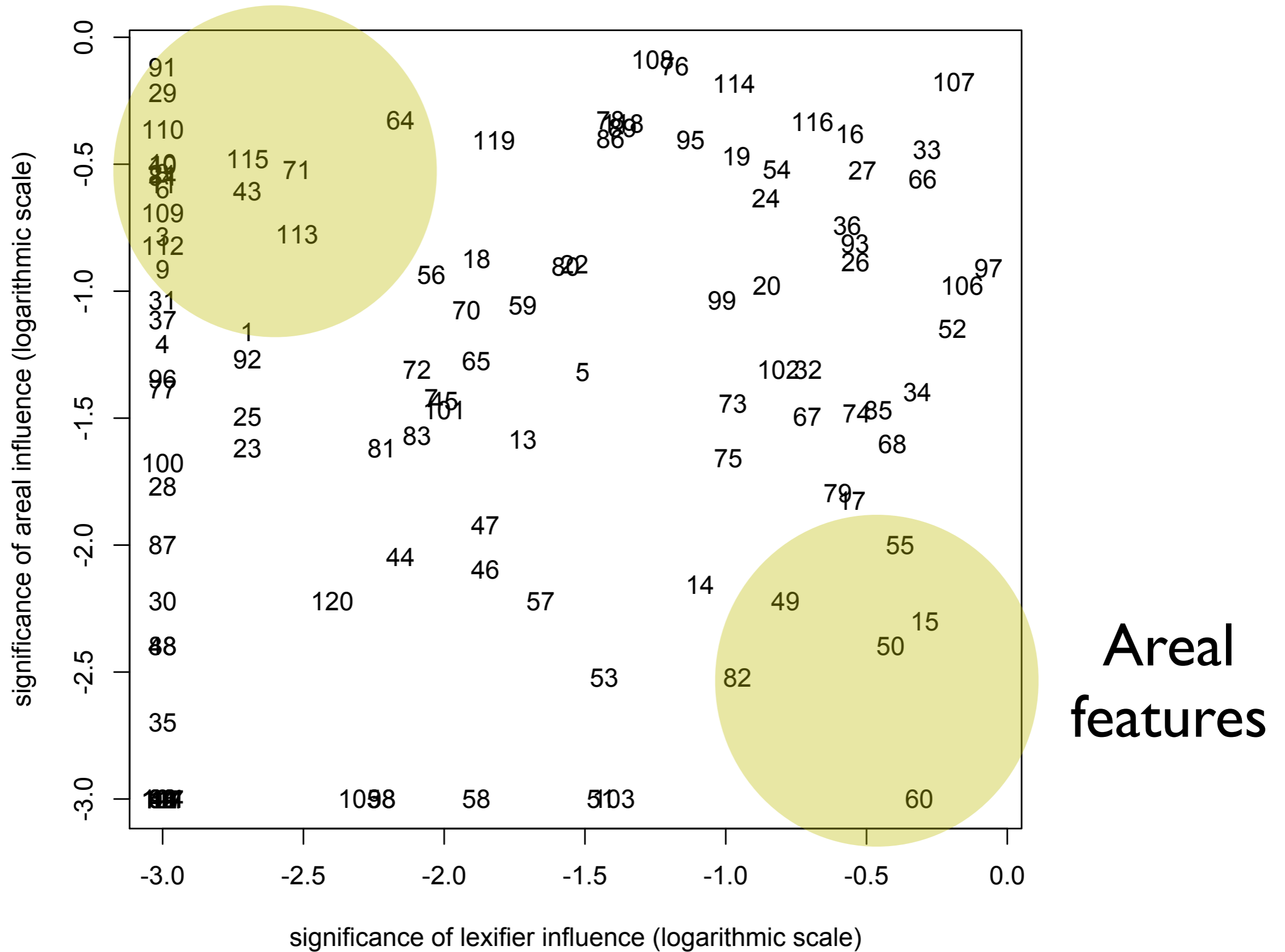
# Clusivity by Area

---

	Areas							
Inclusive/Exclusive Opposition	Africa	Asia	Atlantic	Carib- bean	Indian Ocean	North America	Pacific	South America
No	12	2	8	19	10	3	6	1
Yes	0	0	0	1	0	1	6	0

---

# Lexifier features



# Areal Features

15: Inclusive/Exclusive Distinction in Personal Pronouns

49: Tense-Aspect Systems

50: Negation and Tense-Aspect-Mood Marking

55: Ability Verb and Epistemic Possibility

60: Ditransitive ('Give') Constructions

82: Transitive Motion Verbs: 'Push'

# Lexifier Features

91: Applicative Constructions

29: Indefinite Articles

110: *Save* 'know'

115: Hear and Smell

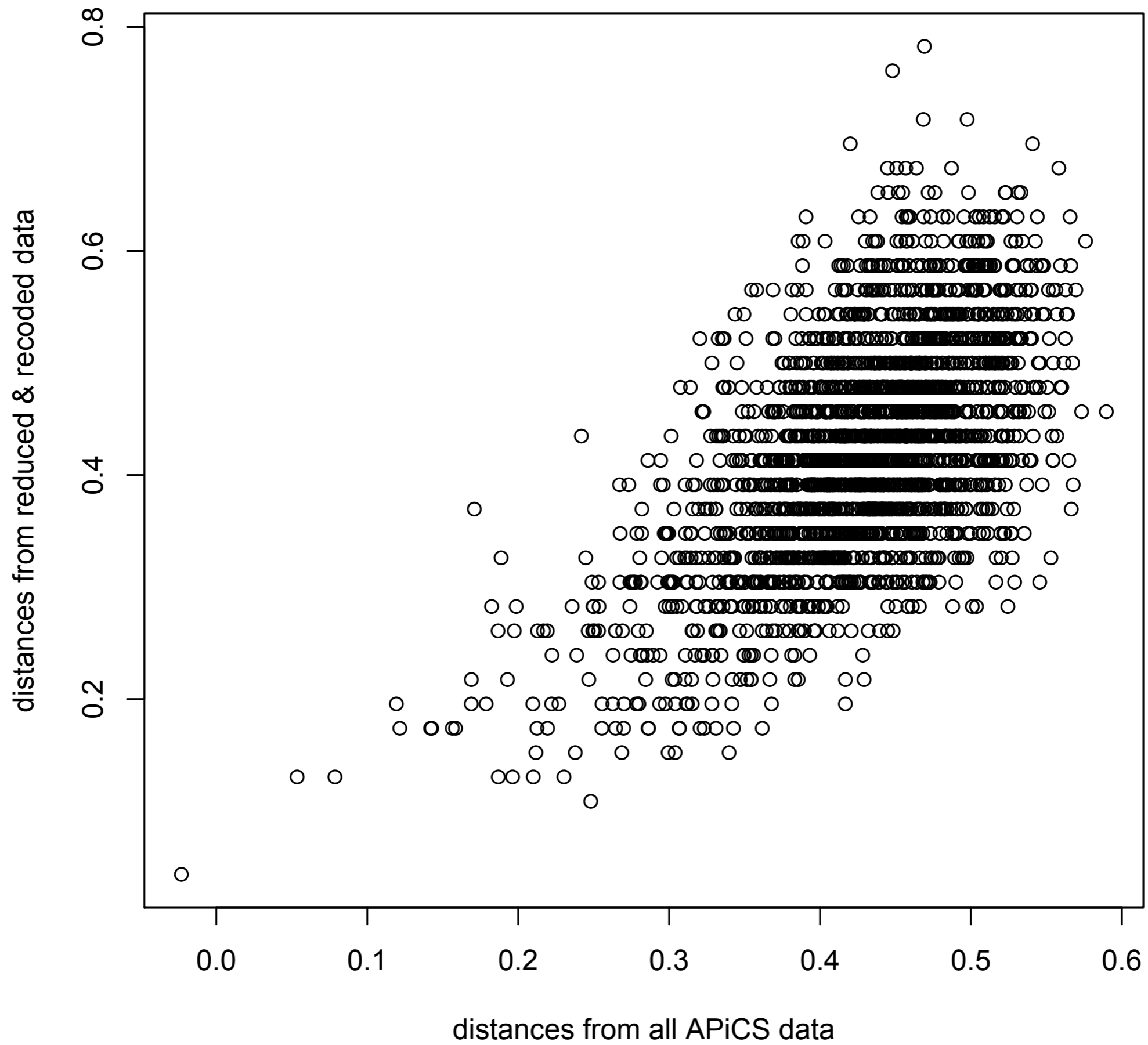
10: Position of Indefinite Article in the Noun Phrase

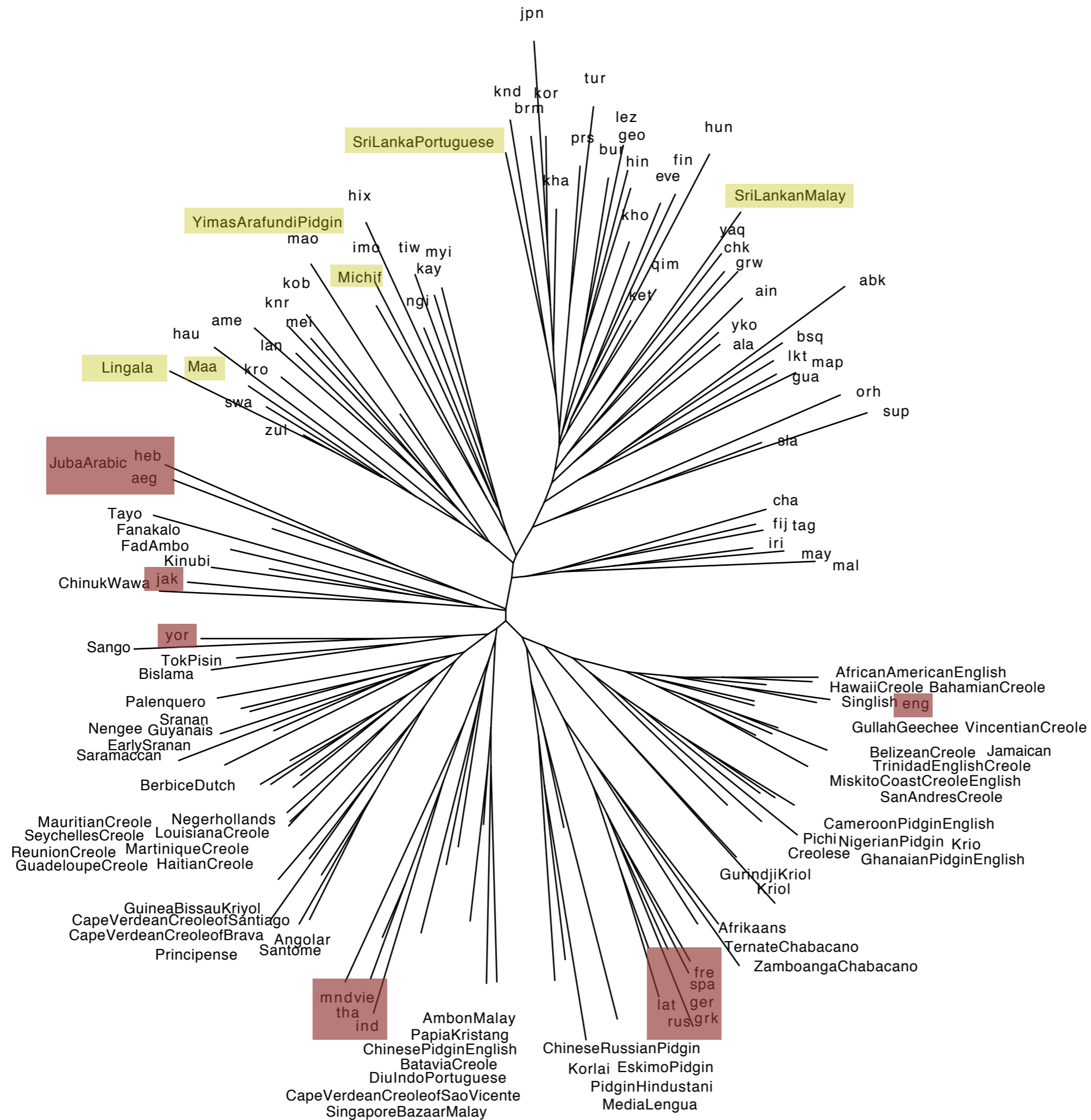
40: Gender Agreement of Adnominal Adjectives

# How do the APiCS language compare to WALS ?



- 46 feature comparable between WALS and APiCS
- reshuffling necessary (order is not the same)
- recoding necessary (values are not always the same)
- multiply-coded features have to be reduced to 'mixed'
- massive data-reduction necessary for comparison !





---

WALS 85 APiCS 4	APiCS languages	WALS languages
postpositions	3	36
prepositions	50	28
mixed	17	0
neither	0	2

---



# Special characteristics of APiCS languages

- prepositions (not postpositions)
- SVO (not SOV)
- mixed position of content interrogative (not non-initial)
- mixed order of noun and adjective (not Noun-Adj)
- mixed order of noun and genitive (not Gen-Noun)

# Special characteristics of APiCS languages

- obligatory pronouns (no subject affix)
- mixed morphological plural (no plural affix)
- mixed negative marking (no negative affix)

# Special characteristics of APiCS languages

- comitative = instrumental
- “and” = “with”
- indefinite article = “one”
- generic-noun based indefinite pronouns
- “have” possession

# APiCS first impressions

- The grammatical structure of APiCS languages is strongly influenced by their lexifier
- Only some features show a more areal consistency
- APiCS languages are clearly different from WALS languages
- except for West-European and mainland South-East Asian languages
- Special characteristics of APiCS languages is partly due to artificial high level of 'mixed' types